

# Linking Michigan State University and Michigan Communities



Edward Scott  
District 11 Director  
Oakland & Macomb Counties  
MSU Extension



## Our mission

Michigan State University Extension  
helps people improve their lives  
through an educational process that  
applies knowledge to critical issues,  
needs and opportunities.





## **Our history**

**1855:** Founded as Agricultural College of the State of Michigan

**1862, 1890 and 1994:** Congress passes Morrill Acts

**1912:** Michigan legislature gives county boards authority to appropriate funds for Extension teaching and research

**1914:** Congress established the Cooperative Extension System through the Smith-Lever Act





# Our history

## **Smith-Lever Act of 1914**

Established the Cooperative Extension Service

Focused on

- Agriculture
- Home economics
- Public policy/government
- Leadership
- 4-H
- Economic development
- Coastal issues (Sea Grant)

# Who is MSU Extension?

- Experts throughout entire state for over 100 years
- 865 faculty and staff members throughout the state to help you respond to local issues in
  - Agriculture
  - Children and youth development
  - Health and nutrition
  - Community and economic development
  - Natural resources
- Business start-up, tech transfer and product development expertise
- Reach every school system in the state; capable of gathering 5,000+ kids for a single event



# **MSU Extension rapidly responds to emerging issues**

- Bovine tuberculosis
- 2014 fruit freeze
- Foreclosure prevention
- Reducing the risk of avian influenza
- Flint water emergency
- Social/emotional health support for farm families in crisis



# MSU: close to you

Faculty and staff members have a vested interest in the communities they serve

- Campus faculty and academic staff
- Extension educators and senior Extension educators
- 4-H program coordinators
- Program instructors
- Program associates
- Support staff (MSU or county employees)



# MSU Extension across the state

- 14 districts
- 275+ educators and specialists
- 240+ paraprofessionals
- ~150 professional support
- 200+ temporary, on-call and students







**Ed Scott**

District 11 Director  
Oakland & Macomb Counties  
[escott3@msu.edu](mailto:escott3@msu.edu)  
248-858-0905



# Productive Partnership

MSU Extension's presence in Oakland County is made possible through a partnership with county government.

- Total MSU Extension Budget  
**\$1,142,396**
- Professional Services Contract  
**\$286,261**
  - 1 Educator from each institute
  - 2 4-H Program Coordinators
  - 2 County employed Program Coordinators (4-H and Food Safety)
  - 2 seasonal horticulture advisors (garden hotline)
  - 8 administrative support positions\*



# Positions Paid By Oakland County Budget

## Oakland County Public Services—MSU Extension

Positions Funded by Oakland County Public Services Salaries and Fringes:

Supervisor Administrative Services - Full Time Eligible	1
Technical Assistant—Part Time Not Eligible (1,000 hours)	1
Office Assistant II—Full Time Eligible (1,000 hours)	3
Office Assistant II—Full Time Not Eligible (2,000 hours)	1
College Intern— Part Time Not Eligible (1,000 hours)	1
Student—Part Time Not Eligible (1,200 hours)	1
Seasonal Horticulture Advisor (520 hours)	2
Extension Home Economist/Food Preservation—Full Time Eligible	1*
Four-H Youth Development Program Coordinator—Full Time Eligible	3**
Natural Science Program Coordinator—Full Time Eligible	<u>1***</u>
Total Position	15

*\*Extension Home Economist/Food Preservation works as an MSU programmer 100% of the time as defined by the Professional Services Contract.*

*\*\*Four-H Youth Development Program Coordinator work as MSU programmers 100% of the time as defined by the Professional Services Contract. As positions vacate, the funding is requested to be moved to Professional Services to fund MSU employed coordinators by Miscellaneous Resolution 18266. Only one of the three positions remains filled by an Oakland County employee, the other two vacated positions fund Professional Services.*

*\*\*\*Natural Science Program Coordinator was vacated and the funding was requested to be moved to Professional Services for MSU to hire an educator for AABI programming in Oakland County. This was approved by Miscellaneous Resolution 18266.*



**Mark Newman—Oakland County Director of Public Services**

**1070501-02837**

Sheila Leddy (OC)  
Supervisor of Administrative Services

**1070501-02554**

Catherine Morris (OC)  
Account Clerk I

**1070501-03163**

Kelly Morris (OC)  
Office Assistant II

**1070501-02719**

April Clos (OC)  
Office Assistant II

**1070501-10663**

Chris Stinson (OC)  
Technical Assistant PTNE

**1070501-09280**

Carla Cade (OC)  
Office Assistant I PTNE

**1070501-06894**

**VACANT**  
Student PTNE

**1070501-10704**

**VACANT**  
College Intern

**Edward Scott—Director District 11 Oakland & Macomb**

**CHILDREN & YOUTH INSTITUTION (CYI)**

**Diane Wisniewski**  
Supervising Educator  
District 11 & District 12

PSC 005244

**HEALTH & NUTRITION INSTITUTE(HNI)**

**Saneya Moore**  
Supervising Educator  
Oakland & Macomb Counties

PSC 005244

**COMMUNITY, FOOD & ENVIRONMENT  
INSTITUTE (CFEI)**

**Bindu Bhakta**  
Natural Resources Educator  
Michigan

PSC 005244

**AGRICULTURE & AGRIBUSINESS INSTITUTE  
(AABI)**

**Lori Imboden**  
Consumer Horticulture Educator  
Oakland County

MR to move funds from vacated Natural  
Sciences Program Coordinator 1070510-  
07996

PSC 005244 & MR 18266

**1070501-02937**

Jason Scott  
Four-H Youth Development Program Coordi-  
nator

Oakland County Employee Performing 100%  
MSUE Work

PSC 005244

**1070501-00231**

Robin Danto  
Extension Home Economist/Food Preserva-  
tion

Oakland County Employee Performing 100%  
MSUE Work

PSC 005244

1070501-03984

Ruth Marcy  
Seasonal Horticultural Advisor

1070501-03983

Becky Irey  
Seasonal Horticultural Advisor

**1070501-02170**

**VACANT**  
4-H Program Coordinator

\*\*\*Position vacant and frozen. Funds moved  
to Professional Services.

PSC 005244 & MR 18266

**1070501-01787**

Debra Morgan  
4-H Program Coordinator

\*\*\*Position vacant and frozen. Funds moved  
to Professional Services.

PSC 005244 & MR 18266

**DIAGRAM KEY**

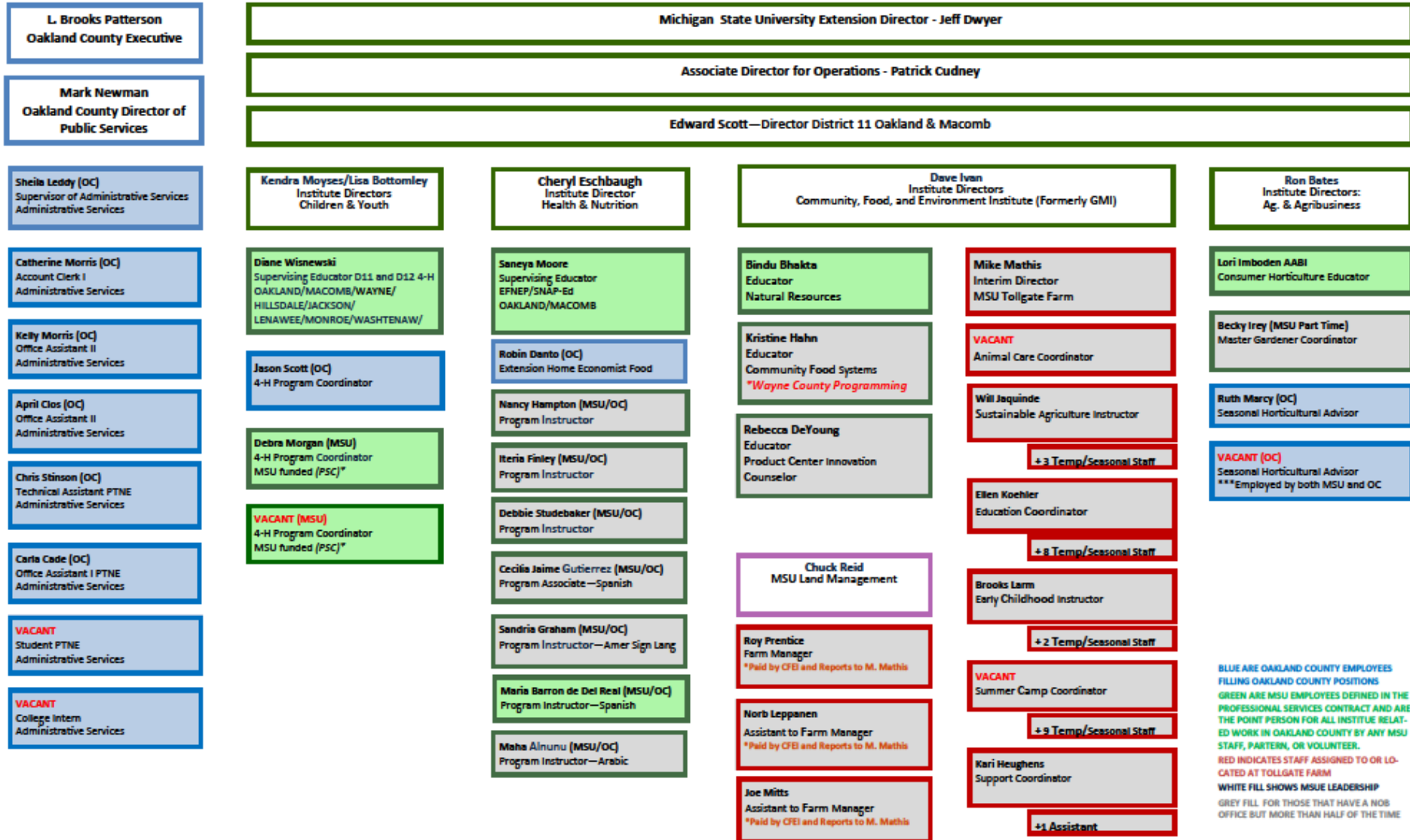
**MSU POSITION CONTRACTED UNDER PROFESSIONAL SERVICES CON-  
TRACT 005244 PAID WITH PROFESSIONAL SERVICES LINE ITEM**

**OAKLAND COUNTY POSITION PAID BY PUBLIC SERVICE MSU EXTEN-  
SION BUDGET SALARIES AND FRINGES**

**MSU POSITION FUNDED BY VACANT FROZEN OAKLAND COUNTY PO-  
SITIONS FOR ADDITIONAL SERVICES SALARIES TRANSFERRED TO  
PROFESSIONAL SERVICES PER MISCELLANEOUS RESOLUTION**



Org Chart MSUE Oakland County 01-28-2019







# Agriculture and Agribusiness

Increase farmers' success while protecting the environment, ensuring food safety, reaching new markets and advancing agriculture through applied research.

We want to ensure agriculture professionals have a thriving knowledge base to become more competitive locally, regionally and internationally.





## **Agriculture and Agribusiness Programming**

- Garden Hotline
- Consumer Horticulture
- Ornamental Horticulture





# Community Food & Environment

Helps residents build stronger communities by enhancing community engagement, strengthening government leadership and financial structures, advancing entrepreneurship, fostering natural resource stewardship, developing local food systems and enhancing the quality of place.



# C.F&E Programming

- Community Food Systems
- Water Quality
- Natural Resources





## **Children and Youth**

Helps children and youth from birth to 19, and the adults who support them, thrive and contribute in a complex and changing world.

Children and youth are equipped to be successful lifelong learners who are socially, emotionally and physically healthy and safe.





## Children and Youth Programming

- Youth Life Skills Development
- Camps
- Leadership & Civic Engagement
- Science Literacy







# Health and Nutrition

Empowers Michigan residents to take control of their health by learning how to build nutritious diets on a budget, increase physical activity, reduce the spread of foodborne illness and become leaders in food business.







# Health and Nutrition Programming

- Nutrition and Physical Activity
- Food Safety





# Residents Served

- 2020 presented very serious obstacles and required us to examine our delivery models.
- In-person programming was halted in March for safety reasons.
- MSU Extension was able to innovate and pivot to virtual methods of serving Oakland residents.

Phone/email contacts	1,850
In-Person Programs	5,989
4-H & Other Youth Programming	<ul style="list-style-type: none"> <li>• 4,291 Youth</li> <li>• 124 Adult Volunteers</li> <li>• 58 Active 4-H Clubs</li> </ul>
Virtual Interactions	79,489

MSU is an affirmative-action, equal-opportunity employer. Michigan State University Extension programs and materials are open to all without regard to race, color, national origin, gender, gender identity, religion, age, height, weight, disability, political beliefs, sexual orientation, marital status, family status or veteran status.



**"AND  
JUSTICE  
FOR ALL"**

The U.S. Department of Agriculture (USDA) prohibits discrimination in all its programs and activities on the basis of race, color, national origin, gender, religion, age, disability, political beliefs, sexual orientation, and marital or family status. (Not all prohibited bases apply to all programs.) Persons with disabilities who require alternative means for communication of program information (Braille, large print, audiotape, etc.) should contact USDA's TARGET Center at (202) 720-2600 (voice and TDD).

El Departamento de Agricultura de los EE. UU. (USDA, siglas en inglés) prohíbe la discriminación en todos sus programas y actividades a base de raza, color, origen nacional, género, religión, edad, impedimentos, credo político, orientación sexual, estado civil o familiar. (No todas las bases de prohibición aplican a todos los programas.) Personas con impedimentos que requieran medios alternativos de comunicación para obtener información acerca de los programas (Braille, tipografía agrandada, cintas de audio, etc.) deben ponerse en contacto con el Centro TARGET de USDA, llamando al (202) 720-2600 (voz y TDD).

To file a complaint of discrimination, write USDA, Director, Office of Civil Rights, Room 326-W, Whitten Building, 14th and Independence Avenue, SW, Washington, DC 20250-9410 or call (202) 720-5964 (voice and TDD). USDA is an equal opportunity provider and employer.

Para presentar una queja sobre discriminación, escriba a USDA, Director, Office of Civil Rights, Room 326-W, Whitten Building, 14th and Independence Avenue, SW, Washington, DC 20250-9410, o llame al (202) 720-5964 (voz y TDD). USDA es un proveedor y empleador que ofrece oportunidad igual a todos.

USDA UNITED STATES DEPARTMENT OF AGRICULTURE • March 1998

Forma AD-475A (revised 3-98)